

插拔式连接器

额定电流: 10 A

额定电压: 300 V

使用线径: 28-16 AWG

间距: 3.5 mm / 3.81 mm

接线方式: 直插式弹簧连接



目录仅供参考，实际规格依产品工程图为准 版本1.0

## 技术数据-UL/CUL

等级 Use Group	B	C	D
额定电压 Rate Voltage [V]	300	-	300
额定电流 Rated Current [A]	10	-	10
接线范围 Wire Range [AWG]	28-16		
耐电压 Dielectric Voltage-Withstand	1.6KV		

## 技术参数-IEC

过电压类别 Overvoltage Category	III	III	II
污染等级 Contamination Class	3	2	2
额定电压 Rated Voltage [V]	160	160	320
额定电流 Rated Current [A]	10	10	10
额定冲击电压 Impulse withstand voltage [KV]	2.5	2.5	2.5
导线截面积[硬/柔] Conductor cross section [mm <sup>2</sup> ]	0.2-1.5		

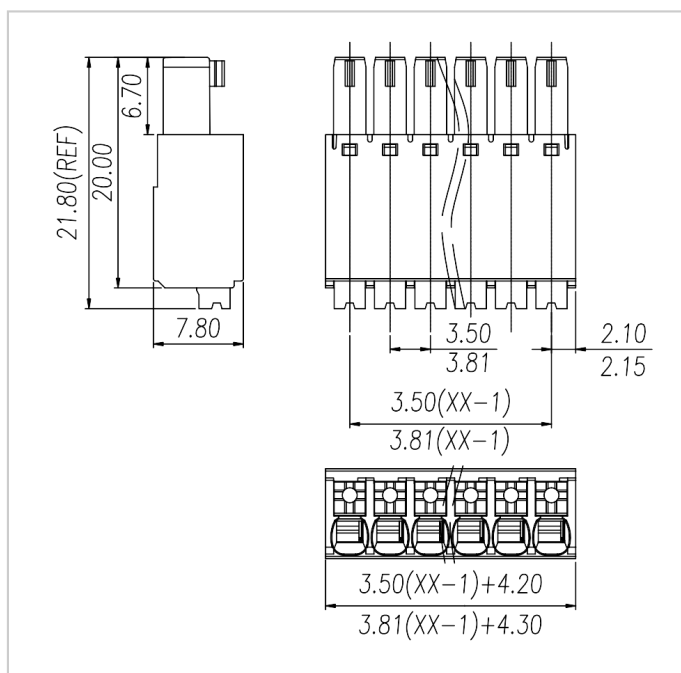
## 材料 Material

绝缘材料 Insulation Material	PA66
阻燃等级 Flame retardant rating	UL94V-0
导体材料 Conductor Material	Copper alloy
导体表面镀层 Plating of conductor surface	Sn plated

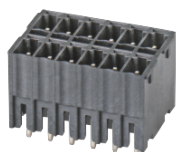
## 一般参数 Other Data

间距/极数 Pitch/Poles [mm]/[P]	3.5 , 3.81/2-24
剥线长度 Stripping Length [mm]	9-10
工作温度 Operating temperature [°C]	-40°C~+105°C

## 尺寸图



## 配件



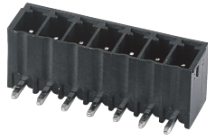
WJ15EDGVHB-THT-3.5/3.81



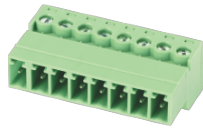
WJ15EDGRHB-THT-3.5/3.81



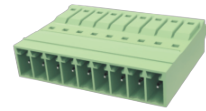
WJ15EDGVC-THR-3.5/3.81



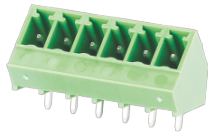
WJ15EDGRC-THR-3.5/3.81



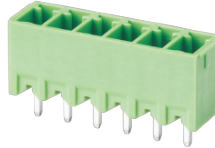
WJ15EDGKR-3.81



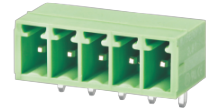
WJ15EDGKNR-3.5



WJ15EDGLC-3.5/3.81



WJ15EDGVC-3.5/3.81



WJ15EDGRC-3.5/3.81



WJ15EDGVH3C-3.5



WJ15EDGRH3C-3.5



WJ15EDGRH3C-THT-3.5



WJ15EDGVH3C-THT-3.5