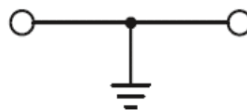


电路图：



目录仅供参考，实际规格依产品工程图为准 版本1.0

### 技术参数-UL ( 1059 )

接线范围 Wire Range	24-10
-----------------	-------

### 技术参数-IEC(60947-7-2)

过电压类别 Overvoltage Category	III
污染等级 Contamination Class	3

### 导线截面积 Conductor cross section

单芯 Solid	0.2-6.0mm <sup>2</sup>
柔性导线 Flexible	0.2-4.0mm <sup>2</sup>
柔性导线带冷压头 Flexible with ferrule	0.25-2.5mm <sup>2</sup>

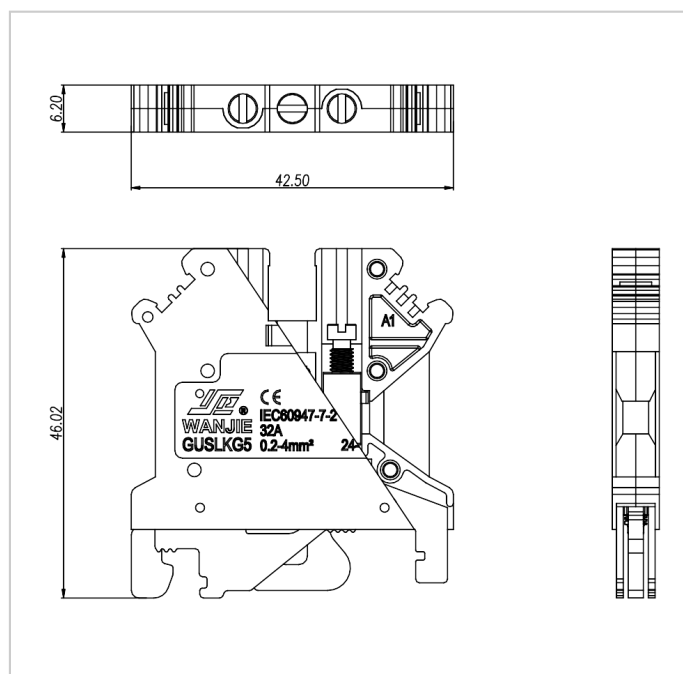
### 材料 Material

绝缘材料 Insulation Material	PA66
阻燃等级 Flame retardant rating	UL94V-0
导体材料 Conductor Material	Copper alloy
导体表面镀层 Plating of conductor surface	Ni plated

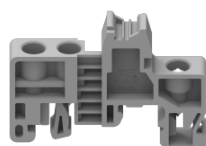
### 一般参数 Other Data

长/高/厚 Length/Height/Thickness [mm]	42.50/46.02/6.20
连接点数 Connection Points	2
剥线长度 Stripping Length [mm]	8
导轨类型 Type of rail	DIN 35 / DIN 32
螺丝/扭矩 Screw/Torque(Max)[N.m]	M3/0.6-0.8
工作温度 Operating temperature [°C]	-40°C~+105°C

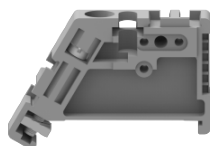
## 尺寸图



## 配件



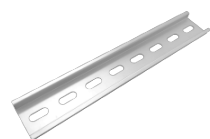
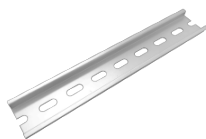
EB-35



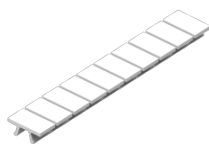
EW-35



DGL2-35x7.5A



DGL2-35x7.5B



DGL2-35x7.5C



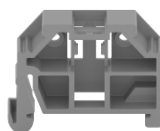
DGL2-35x7.5D



MUV4-10



DGS1-35x7.5W4.2x12



DGS1-35x7.5W5.2x15

DGS1-35x7.5W

EC-35