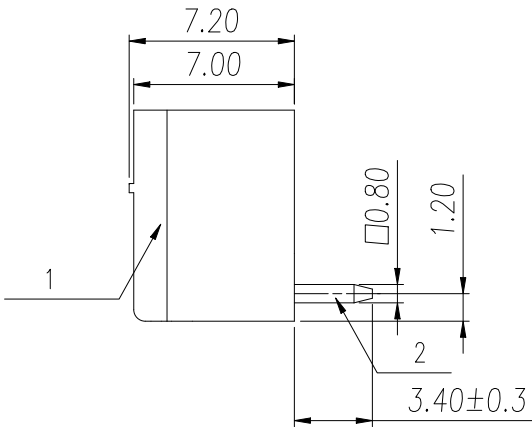
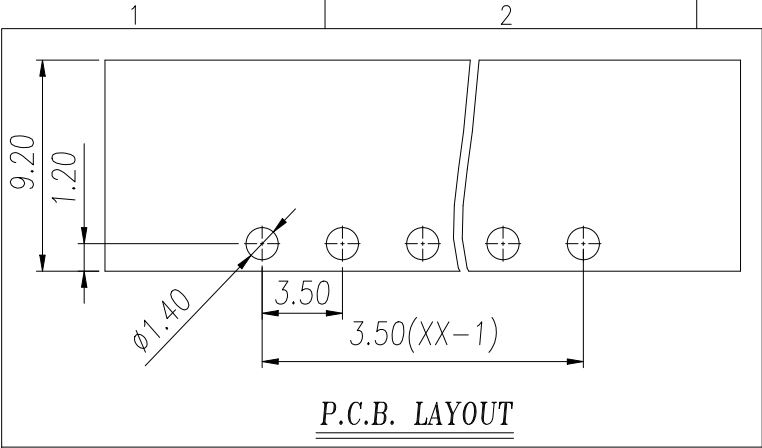
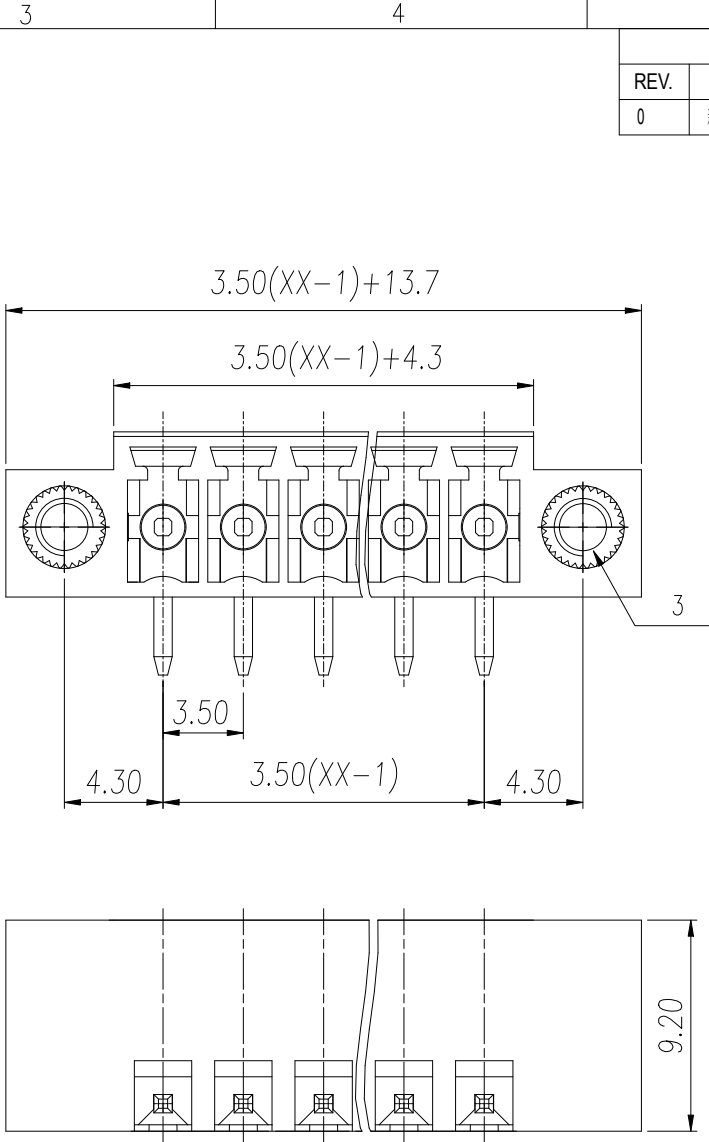






Transfer or duplication of this document as well as the utilization or communication of its contents are prohibited unless explicit authorization is granted. Violations will be liable for compensation. All rights reserved for patent, utility model or designs registrations. 除丰给予明确授权，否则禁止转让、复制、利用、交流本文件的内容。侵犯者将负赔偿责任。本公司保留对涉及发明、实用新型和外观专利的所有权利。

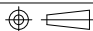



General Tolerances							— □ ⊥		
variable range	to 6	over 6 to 10	over 10 to 30	over 30 to 60	over 60 to 100	over 100 to 160	over 160 to 10	over 10 to 100	over 100 to 100
tolerance	±0.20	±0.30	±0.50	±0.70	±1.00	±1.30	±1.60	0.10	0.30 0.60



3	Nut	Copper Alloy	M2.5
2	Pin	Copper Alloy	Sn Plated
1	Housing	PA66	UL94V-0
ITEM	NAME OF PART	MATERIAL	NOTES

5					6								
REVISION RECORD													
REV.		ESCRIPTION				ECN No.		APPROVED		DATE			
0		新发行						YaoFei		23.11.24			
		UL/CUL 技术参数											
		UL/CUL Technical Data											
		等 级		Use Group				B		C		D	
		额定电压		Rated Voltage [V]				300		-		300	
		额定电流		Rated Current [A]				8		-		8	
		接线范围		Wire Range				-					
		单/多芯线		Solid/Stranded [AWG]									
		耐电压		Withstanding Voltage				1600V/1Min					
				IEC 技术参数									
				IEC Technical Data									
过电压类别		Overvoltage Category				III		III		II			
污染等级		Contamination Class				3		2		2			
额定电压		Rated Voltage [V]				160		160		250			
额定电流		Rated Current [A]				7		7		7			
额定冲击电压		Impulse withstand voltage [KV]				2.5		2.5		2.5			
导线截面积		Conductor cross section				-							
硬质/柔性导线		Solid/ flexible [mm²]											
		一般参数 Other Data											
		间距 Pitch /极数 Poles [mm]/[P]				3.5 / 02~24							
		工作温度 Operating temperature [°C]				-40~105							
		焊锡温度 Soldering temperature				260°C/5S							
		引针尺寸 Pin Dimensions [mm]				0.8*0.8							
		PCB板孔径 PCB Hole Diameter [mm]				Ø1.4							
		符合RoHS环保要求											

DES.	YaoFei	DATE	23.11.24	UNITS	mm	THIRD ANGLE PROJECTION	
CHK.	YangHJ	DATE	23.11.24	SIZE	A4	TYPE: CUSTOMER DRAWING	SHEET 1 of 1
APP.	JASON	DATE	23.11.24	SCALE	3: 1	DRAWING TYPE: SP-03	REV 0
 慈溪市万捷电子有限公司 CIXI WANJIE ELECTRONIC CO., LTD						PART NO.: WJ15EDGRM-3.5-XXP-1Y-00A	